



## Disassembly and Lubrication of YV-094D-F (M-94) Y-Valve

- A) Remove the handle (4) in order to remove the top bonnet (3):
- 1) Remove the white plug (11) on top of handle (4).
  - 2) Remove the screw (10) inside the handle.
  - 3) Remove the handle (4).
  - 4) Remove the top bonnet (3) by removing the three screws (13).

- B) Reattach the handle in order to complete disassembly of the Y-valve.

**Note:** Before further disassembly, use a marking pen to draw a witness line on the hose and on the bottom bonnet (3). This is essential to ensure proper alignment when reassembling the valve.

- 1) Reattach the handle (4) with the screw (10).
- 2) Loosen and remove all three screws (8), nuts (9) and spacers (6).
- 3) When all the screws are removed from the Y-valve, pull up on the handle with a twisting motion. This will remove the seat (5) and O-ring (7) from the body (1).
- 4) Inspect inside the body and clean if necessary.
- 5) Remove the handle and stop ring (12) from the plug (2).

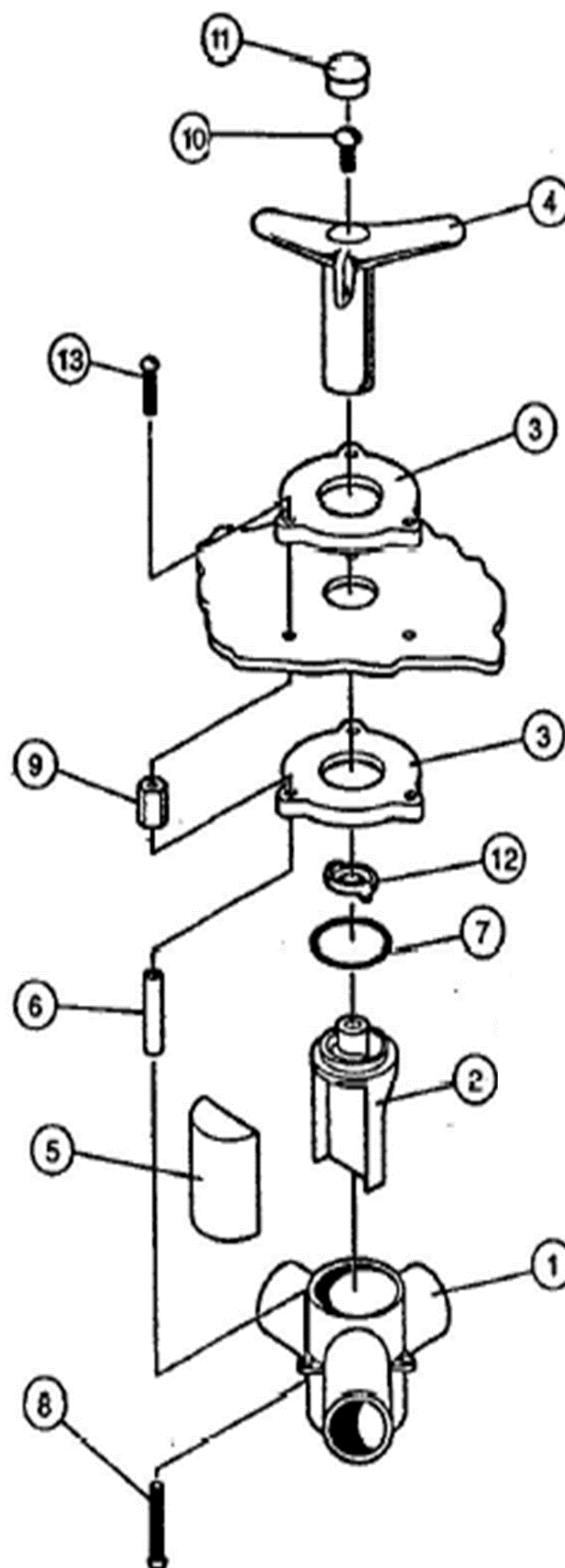
- C) Lubricate the Y-Valve

- 1) Using the lubricant provided, grease the inside of the body completely.
- 2) Grease the seat and O-ring.

- D) Reassemble the Y-Valve.

- 1) Reassemble the plug, seat, O-ring and stop ring into the body.
- 2) Using the handle, push down on the plug to be sure the seat and O-ring are all the way down inside the body.
- 3) Be sure the stop ring is flush with the top of the plug and the bonnet is sitting properly and aligned with the witness mark on the hose.
- 4) Replace all the screws, spacers and nuts. Be sure not to overtighten the nuts.
- 5) Replace the handle.

For lubricating grease, we recommend Dow Corning Silicone Grease #44.



### Question

"My Y-valve is frozen and I can't turn the handle. Is there some way to lubricate it?"

### Answer

Periodically, Y-Valves need to be lubricated to ensure proper operation. These instructions show how to disassemble and lubricate your flush mount "94" series Y-valve.

ITEM	PART NAME
1	Body
2	Plug
3	Bonnet (2)
4	Handle
5	Seat
6	Spacer – 0.885 in (3)
7	O Ring #220
8	Machine Screw 10-24 x 1½ (3)
9	Brass Hex Nut (3)
10	Machine Screw ¼ -20 x ½
11	White Plug
12	Stop Ring
13	Machine Screw 10-24 x ¾ (3)