

For maple sap vacuum production on up to 400 taps



Performance

Flow Rate	per stroke: 0.44 Qt (0.42L)
Max Vacuum	22 in Hg (0.7 bar) ¹
Max Head	25 ft (7.6 m) ¹
Max Pressure	11 psi (0.7 bar) ¹
Max Service Temp	220°F (104°C)

¹ depending on choice of motor

² with a check valve

Specifications / Options

Body & Ports ¹	Natural (Pigment-free) Delrin / White ²
Clamp Ring	Aluminum Motor Mounting Plate
Valves ¹	Flapper ² , Umbrella ²
Diaphragm ¹	Buna-N ² , Silicone ² , Santoprene ²
Clevis/Button Assembly ¹	Natural Delrin (White) ² and Stainless Steel ²
Motor Ambient Temp	Ambient Temp: 14°F ~ 104°F (-10°C ~ 40°C)
Motor Enclosure	Enclosure provides limited protection against ingress of dust and water spray.

¹ in contact with fluid

² FDA-approved material

Available Ports

	in	1/2	3/4	1	1-1/8	1-1/4
	cm	1.27	1.91	2.54	2.86	3.18
Hose (Smooth)				S	•	•
NPT Female (Tapped)		•	•			
NPT Male (Threaded)			•	•		
Barbed					•	

S Standard • Optional

- **Up to 28 in Hg vacuum with wet pump valves**
 - ◇ Dry valves: 20 in Hg
- **Use on up to 400 taps**
- **No releaser required**
 - ◇ Creates vacuum and transfers fluid
 - ◇ Liquid will not damage pump
 - ◇ Can run dry without damage
- **Wetted components made of FDA-approved materials**
- **Quiet-running 115 VAC 72 rpm motor**
 - ◇ Features water-resistant motor enclosure
- **Connecting rod bearings require no lubrication**
- **Pump diaphragm easily accessible**
- **Wired with on/off switch and 6' power cord**
- **Accommodates 1/2 in—1-1/4 in hose**

Valve Options

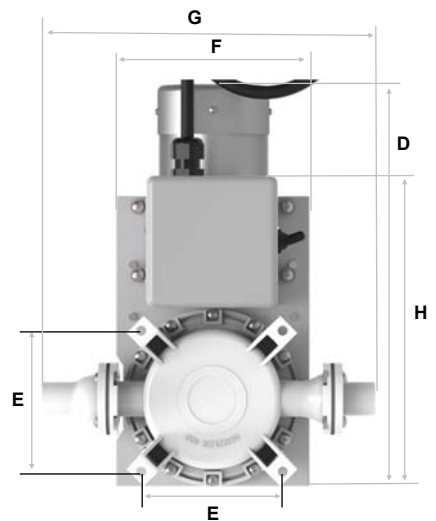
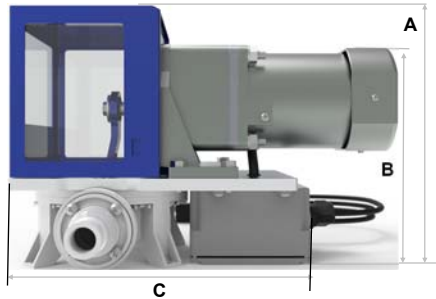
Flapper	General purpose liquid transfer		For vertical pump mounts, inlet must be below outlet
Umbrella	Clear liquids	Best vacuum service	Mount pump in any position

Available 115 VAC Motors & Performance

Pump Flow Rate ³ (GPM)	Motor Speed ³ (Name-plate RPM)	Full Load Torque (in-lbs.)	Input HP	Full Load Amps	Max Pressure (psi)	Max Lift ⁴ (ft)	Max Head(ft)
3.3	30	118	1/19	1.4	10	20	23
6.6	60	133	1/8	1.6	11	20	25
7.9	72	111	1/8	1.6	10	20	23
11.0	100	80	1/8	1.6	7	16	16

³ at 0 lift, 0 head

⁴ Check valve recommended for lifts above 12 ft.

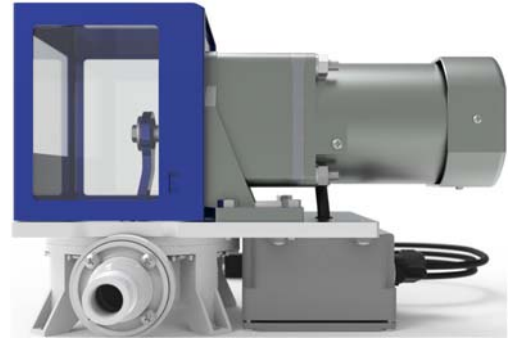


	in	cm
A	8-1/4	21.0
B	7-1/4	18.4
C	9-5/8	24.4
D	12-3/4	32.4
E	4-5/16	11.0
F	6	15.2
G	10-1/4	26.0
H	9-5/8	24.4
Mounting Holes	1/4	0.64
Bolt Circle Diam.	6-1/8	15.6
Weight	16.1 lb	7.3 kg

Guzzler® 115 VAC Electric Pump GE-0401N

Example: GE-0401N-027-48-5050-BP

- Guzzler Electric Pump
- Model style #0401N: Natural Delrin Body, Opposite Side Ports
- White Buna-N Flapper Valves
- Buna-N (FDA-approved material) Diaphragm
- SS Washer & Aluminum Clevis
- Motor Mounting Plate Clamp Ring
- Inlet: 1" Smooth
- Outlet: 1" Smooth
- 115 VAC / 72 RPM / 111 T Motor; water-resistant motor enclosure



Recommended options for use in maple sap collection

Guzzler Product	
Option	Code
Electric Pump	GE

Style (Family)	
Option	Code
Natural Delrin, Opp. Side Ports	0401N

Speed Control	
Option	Code
None	0

Valves	
Option	Code
Flapper (White Buna)*	2
Umbrella (Silicone) *	7

Diaphragm	
Option	Code
Buna Nitrile *	1
Silicone *	7
Santoprene *	8

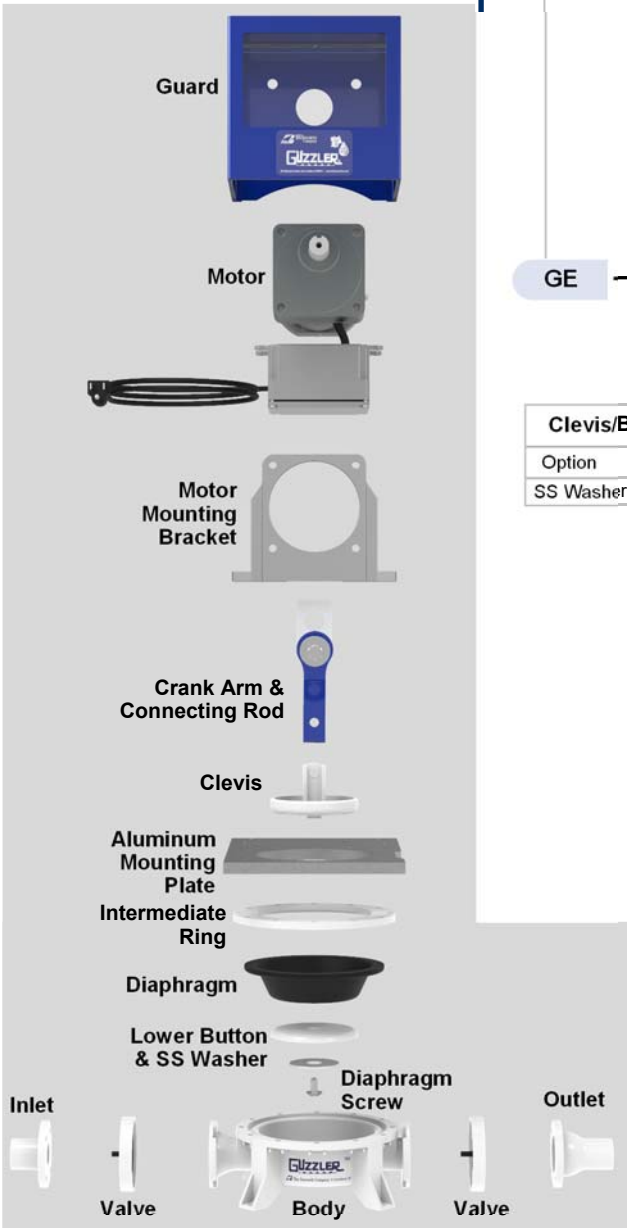
GE - 0401N - 0 2 1 - 4 8 - 50 50 - BP

Clevis/Button Assembly	
Option	Code
SS Washer & Alum Clevis	4

Clamp Ring	
Option	Code
Motor Mounting Plate	8

115 VAC Motors		
Speed (rpm)	Torque (in-lbs)	Code
30	118	BD
60	133	BK
72	111	BP
100	80	BT

Hose Connections		
Option	Code	
	Inlet	Outlet
1/2" NPT Tapped	31	31
3/4" NPT Tapped	41	41
3/4" NPT Threaded	42	42
1" Smooth	50	50
1" NPT Threaded	52	52
1-1/8" Smooth	60	60
1-1/8" Barbed	63	63
1-1/4" Smooth	70	70



* These elastomers are made from FDA-approved material.