



- 11 psi (22 in Hg vacuum)
- 4.1 GPM – 13.8 GPM (0.5—1.8 cfm)
- Self-priming
- Can run dry without damage
- Quiet-running 115 VAC motor with optional speeds from 30, 60, 72 or 100 RPM
- Durable, lightweight Acetal plastic pump body and flanges

Performance

| | |
|------------------|---------------------------------|
| Flow Rate | per stroke: 0.55 Qt (0.52L) |
| Max Lift | 20 ft (6.1 m) ^{1,2} |
| Max Head | 25 ft (7.6 m) ¹ |
| Max Pressure | 11 psi (0.7 bar) ¹ |
| Max Vacuum | 22 in Hg (0.7 bar) ¹ |
| Max Service Temp | 212°F (100°C) |

¹ depending on choice of motor and valves
² with a check valve

Specifications / Options

| | |
|--------------------------|--|
| Body & Ports * | Acetal (POM) Copolymer / Gray |
| Clamp Ring | Aluminum Motor Mounting Plate |
| Valves * | Flapper, Duckbill, Umbrella |
| Diaphragm * | Buna-N, Buna-N Double Sided, Neoprene, Viton, EPDM, Silicone |
| Clevis/Button Assembly * | SS Washer + Aluminum Clevis |
| Motor Ambient Temp | Ambient Temp: 14°F ~ 104°F (-10°C ~ 40°C) |
| Motor Enclosure | Provides limited protection against ingress of dust and water spray. |

* in contact with fluid

Available Ports

| | in | 1-1/4 | 1-1/2 | 2 |
|---------------------|----|-------|-------|------|
| | cm | 3.18 | 3.81 | 5.08 |
| Hose (Smooth) | | | S | • |
| NPT Female (Tapped) | | • | | |
| NPT Male (Threaded) | | | • | |




S Standard • Optional

- Accommodates 1-1/4" – 2" hose

- Available with wide variety of hose connections

- Wired with on/off switch and 6' power cord

Valve Options

| Flapper** | General purpose liquid transfer | | For vertical pump mounts, inlet must be below outlet |
|---|---------------------------------|---------------------|--|
|  | | | |
| Duckbill** | For dirty liquid and sewage | Good vacuum service | Mount pump in any position |
|  | | | |
| Umbrella | Clear liquids | Best vacuum service | Mount pump in any position |
|  | | | |

Available 115 VAC Motors & Performance

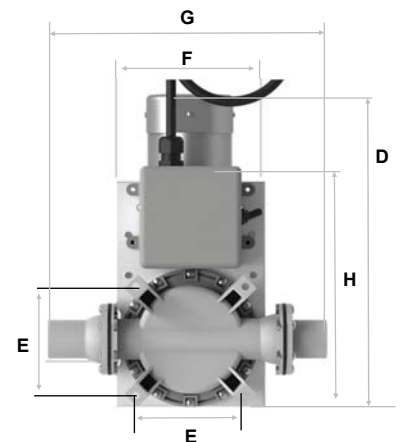
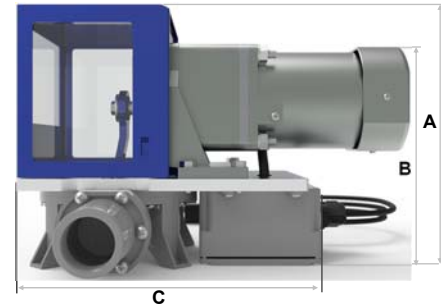
| Pump Flow Rate ³ (GPM) | Motor Speed ³ (Name-plate RPM) | Full Load Torque (in-lbs.) | Input HP | Full Load Amps | Max Pressure (psi) | Max Lift ⁴ (ft) | Max Head(ft) |
|-----------------------------------|---|----------------------------|----------|----------------|--------------------|----------------------------|--------------|
| 4.1 | 30 | 118 | 1/19 | 1.4 | 10 | 20 | 23 |
| 8.3 | 60 | 133 | 1/8 | 1.6 | 11 | 20 | 25 |
| 9.9 | 72 | 111 | 1/8 | 1.6 | 10 | 20 | 23 |
| 13.8 | 100 | 80 | 1/8 | 1.6 | 7 | 16 | 16 |

³ at 0 lift, 0 head

⁴ Check valve recommended for lifts above 12 ft.

NOTE: This pump is not potable-water rated.

Quiet-running, efficient 115 VAC motor available in a range of speeds and torques.

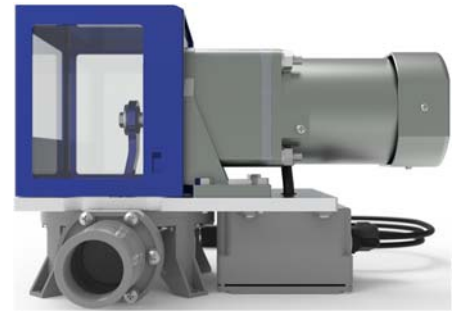


| | in | cm |
|-------------------|---------|--------|
| A | 8-1/4 | 21.0 |
| B | 7-1/4 | 18.4 |
| C | 9-5/8 | 24.4 |
| D | 12-3/4 | 32.4 |
| E | 4-5/16 | 11.0 |
| F | 6 | 15.2 |
| G | 10-7/8 | 27.6 |
| H | 9-5/8 | 24.4 |
| Mounting Holes | 1/4 | 0.64 |
| Bolt Circle Diam. | 6-1/8 | 15.6 |
| Weight | 16.4 lb | 7.4 kg |

Guzzler® 115 VAC Electric Pump GE-0501D

Example: GE-0501D-011-48-8080-BP

- Guzzler Electric Pump
- Model style #0501D: Acetal Body, Opposite Side Ports
- No Variable Speed control option
- Buna-N Flapper Valves
- Buna Diaphragm
- SS Washer & Aluminum Clevis
- Motor Mounting Plate Clamp Ring
- Inlet: 1-1/2" Smooth
- Outlet: 1-1/2" Smooth
- 115 VAC / 72 RPM / 111 T Motor; water-resistant motor enclosure



| Guzzler Product | |
|-----------------|------|
| Option | Code |
| Electric Pump | GE |

| Style (Family) | |
|-------------------------|-------|
| Option | Code |
| Acetal, Opp. Side Ports | 0501D |

| Speed Control | |
|---------------|------|
| Option | Code |
| None | 0 |

| Valves | |
|---------------------|------|
| Option | Code |
| Flapper (Buna-N) | 1 |
| Duckbill (Buna-N) | 6 |
| Umbrella (Silicone) | 7 |

| Diaphragm | |
|--------------|------|
| Option | Code |
| Buna Nitrile | 1 |
| Buna-N 3-Ply | 2 |
| Neoprene | 3 |
| Viton | 4 |
| EPDM | 5 |
| Silicone | 7 |

GE - 0501D - 0 1 1 - 4 8 - 80 80 - BP

| Clevis/Button Assembly | |
|-------------------------|------|
| Option | Code |
| SS Washer & Alum Clevis | 4 |

| Clamp Ring | |
|----------------------|------|
| Option | Code |
| Motor Mounting Plate | 8 |

| Hose Connections | | |
|---------------------|-------|--------|
| Option | Code | |
| | Inlet | Outlet |
| 1-1/4" NPT Tapped | 71 | 71 |
| 1-1/2" Smooth | 80 | 80 |
| 1-1/2" NPT Threaded | 82 | 82 |
| 2" Smooth | 90 | 90 |

| 115 VAC Motors | | |
|----------------|-----------------|------|
| Speed (rpm) | Torque (in-lbs) | Code |
| 30 | 118 | BD |
| 60 | 133 | BK |
| 72 | 111 | BP |
| 100 | 80 | BT |

